



EPSON
EXCEED YOUR VISION

INTERACTIVE PROJECTORS
EB-536Wi/685Wi/695Wi/1485Fi

EPSON
EXCEED YOUR VISION

100" EPSON
PROJECTOR DISPLAY



70" FLAT
PANEL DISPLAY



**FLEXIBLE
DISPLAY SIZE**

From small spaces to big areas,
project visuals up to 100 inch.



VALUE FOR MONEY

Projectors give larger display
at a lower cost per inch over
flat panel displays.



**FLEXIBLE
PLACEMENT**

Projector can be placed in
multiple positions to fit any
presentation setting.

**BIG ON DETAILS,
MAXIMISING BUSINESS
ENGAGEMENTS.**

In business, every minor detail matters. Ensure that everyone sees everything from every corner of the room, clearly. Epson projectors are developed to display images with exceptional clarity that will surely engage and captivate all audiences. Compact in size but big on projection. It's In The Details.



Amaze and wow your audience with the Epson's interactive projector series. Our interactive projectors come complete with built-in digital whiteboard that allows the users to draw and write on projected images without a PC connection. With superior image quality and wider projection size, benefit from increased engagement and better retention. Achieve more out of your presentations with Epson's state-of-the-art projectors today!



IT'S IN THE DETAILS.

With 3LCD panels, every projection gives you spectacular true colours.

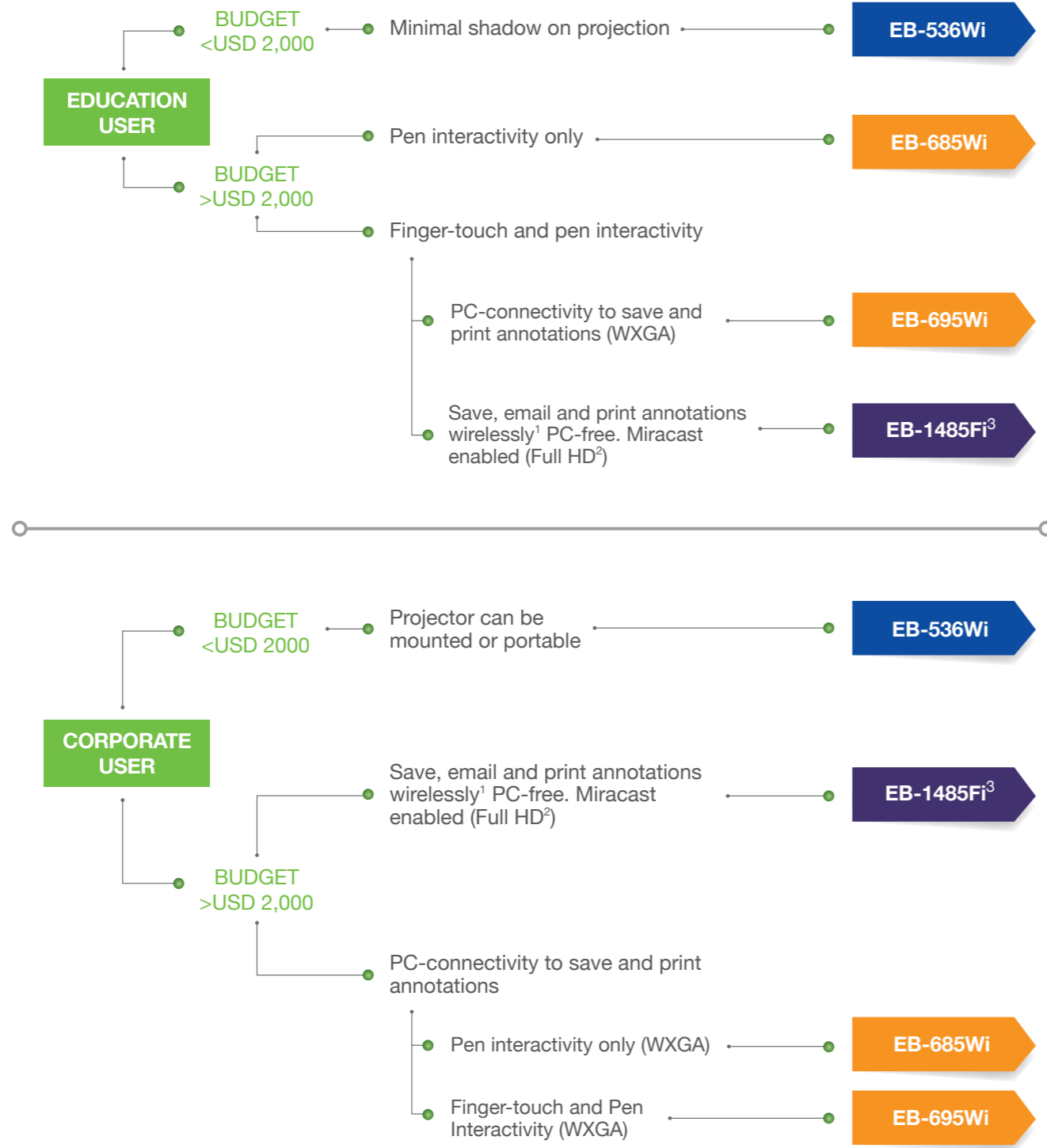


IT'S IN THE DETAILS.

3LCD technology that delivers quality projected images and reliable performance.

* Color brightness(color light output) in brightest mode, measured by a third-party lab in accordance with IDMS 15.4. Color brightness will vary depending on usage conditions. Top-selling Epson 3LCD projectors versus top-selling 1-chip DLP projectors based on NPD sales data for May 2017 - April 2018.

Choose an Epson interactive projector that's right for you.



CATEGORY	BASIC	ADVANCED		EXPERT
Model	EB-536Wi	EB-685Wi	EB-695Wi	EB-1485Fi
Product Image				
Key Benefits	<ul style="list-style-type: none"> Minimal shadow interference Easy set-up with horizontal keystone slider 10,000 hours lamp life in Eco mode 	<ul style="list-style-type: none"> No or minimal shadow interference Print with compatible Epson network printers Optional wireless connectivity 10,000 hours lamp life in Eco mode 		<ul style="list-style-type: none"> 20,000 Hours Maintenance-Free Laser Light Source Fully-sealed Optical Engine for improved dust-proofing
Throw Distance	Short Throw (Throw Ratio: 0.48 - 0.65)	Short Throw (Throw Ratio: 0.28 - 0.37)		Ultra Short Throw (Throw Ratio: 0.27 - 0.37)
Resolution	WXGA (HD-Ready)			1080p (Full HD) ¹
Brightness (White and Colour)	3,400 lm	3,500 lm		5,000 lm
Light Source	Lamp			Laser Light Source
Interactivity				
Dual Pen	● ²	●	●	●
Finger-Touch			●	●
PC-free Annotation	●	●	●	●
Wireless PC Interactive		● ³	● ³	●
Multi-location Interactivity				●
Seamless Dual Screen Interactivity		●	●	●
Microsoft Office Ink Support	●	●	●	●
Projector Control Menu	●	●	●	●
PC-Free Whiteboard Mode				
Scan, Print, Email, Save		Print and Save only		●
Whiteboard Sharing				●
Connectivity				
Network Projection	●	●	●	●
iProjection	● ³	● ³	● ³	●
Multi-PC Projection ³	●	●	●	●
Split Screen		●	●	●
DVI Video Output				●
Miracast				●
Environmentally-friendly				
Lamp Optimiser based on image content brightness	●	●	●	●
Auto Brightness based on environmental lighting		●	●	●
10,000 Hours Lamp Life in Eco mode	●	●	●	

¹ With compatible Epson printers.
² Pixel shifting technology achieves Full HD resolution on screen.
³ Laser Light Source projector with 20,000 hours maintenance-free performance.

¹ Pixel shifting technology achieves Full HD resolution on screen.
² Only 1 pen is supplied. Second pen is sold separately.
³ Requires optional Wireless LAN dongle sold separately.

Intelligent Interactive Experience

Dual Interactive Pens

The two new interactive pens* are designed for high-speed writing, accurate response and long battery life. Both pens are able to draw at the same time throughout the whole screen with its own selected colour.

Smoother writing experience

- High-sensitivity pen tip
- Soft, low-noise pen tip

Easy to grip

- Centre of gravity

Side button for convenience

- Right click
- Activate assigned function

* For EB-536Wi, only 1 pen is supplied. Second pen is sold separately.

Finger Touch Interactivity

EB-695Wi and EB-1485Fi only

Control your presentations and PC applications or navigate the modern touchscreen interface with the finger-touch enabled interactive projectors.

When connected via USB cable to a PC running Epson Easy Interactive Tools v.5.0 software, the projector supports six fingers and two interactive pens. When operating as a standalone without a PC, the projector enables two fingers and two pens to write at the same time.

Point

Zoom

Swipe

Move

Write

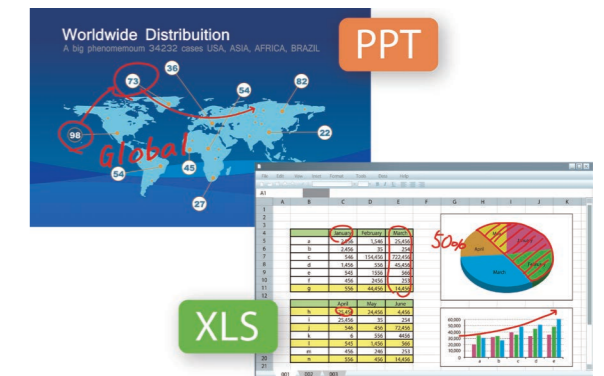
PC-Free Interactive

Write and draw on the projector's built-in digital whiteboard or any image projected from other non-PC sources.



Microsoft Ink Support

Draw and write on Microsoft PowerPoint, Excel or Word documents using Microsoft Office Ink.



Dual Screen Seamless Interactivity

Except EB-536Wi

To deliver the most immersive interactive experience, two projectors can be installed side by side to create an ultra-wide interactive panoramic screen of up to 180 inches diagonal*. Write or move objects seamlessly across the dual screen with your fingers and/or interactive pens.

* EB-1485Fi only. For EB-685Wi and EB-695Wi, screen size is up to 178 inches diagonal.



Superior Image Quality



No Reflection Glare On Projection

The projection screen is not glossy and does not cause glaring reflections of ambient light like florescent lamps and sunlight from windows.



Larger Images

With a wide projection screen size of up to 120 inches*, you enjoy bigger image projection for greater visibility.



Ultra-short Throw Advantage

As light is not blocked by the presenter, less shadow is formed on the screen, allowing the audience to clearly see the information projected at all times.

* For EB-1485Fi only, at 16:6 ratio. Projected screen size of EB-536Wi is up to 116 inches, EB-685/695Wi are up to 100 inches.

Seamless Connectivity

Wireless Multi-PC Projection

Wireless Multi-PC Projection Project from your laptop wirelessly using Epson iProjection for PC. Up to 50 laptops and mobile devices can connect to a single projector via this software. A laptop or device can be assigned as the moderator and send a projected image to connected clients. The moderator* can also look at thumbnail previews of connected clients and select up to four of them to be projected on the screen at the same time for comparison.

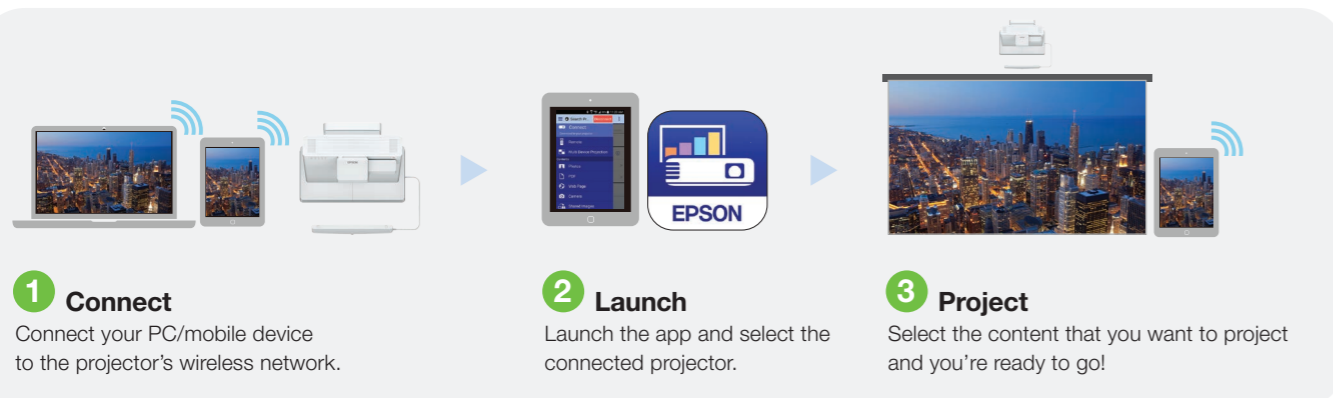
* Applicable to all models except for EB-536Wi.



Project Documents, Photos, and More Wirelessly

Enjoy wireless projection via the Epson iProjection* app with your Chromebook or mobile devices. This powerful app allows you to share, manage, and annotate on displayed content from an easy-to-use, intuitive menu. iProjection* for Chromebooks supports fully mirrored display of all of your Chromebook content including Google Docs, Slides, Sheets, and the Chrome browser.

Using the iProjection App is easy:



* In iProjection mode, projector profile search, multi-screen display, distribution function, audio transfer, movie file transfer, and encryption data transfer capabilities are not supported.

Seamless Edge Blending

EB-1485Fi only

Engage your audience in compelling and fascinating presentations on a larger seamless screen with two Epson EB-1485Fi projectors (with interactivity), or up to four (without interactivity) at any one time. With Epson EB-1485Fi's built-in edge blending function, you can now interact, control, and present immersive content seamlessly over one large panoramic screen.



Ease of Installation

EB-1485Fi only

Quick Installation and Low Cost

Epson EB-1485Fi's new wall mount design makes installation a breeze. A single LAN cable is all you need to connect to the HDBaseT Control Box. Calibrate the screen with a simple one-click Auto Adjustment feature and the new, slimmer Finger Touch Unit allows for better motion detection.

* Compared against current Epson interactive display products.

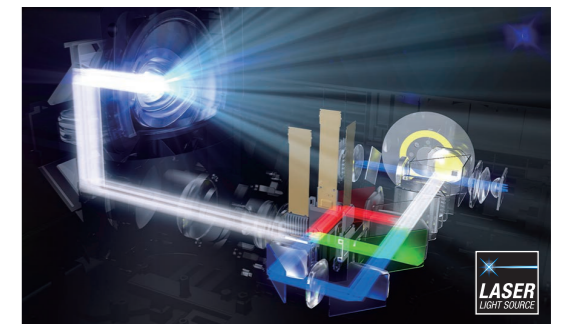


Laser Light Technology

EB-1485Fi only

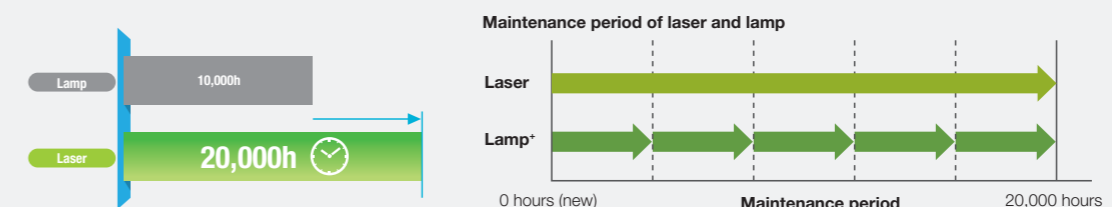
Revolutionary Laser Light Source

Blue light from the laser is projected through a beam splitter, which divides the light into two beams. One beam is reflected by a phosphor wheel, changing it into yellow, while the other beam remains blue. The two beams are then recombined into white light and separated into red, green and blue through dichroic mirrors. Each of the three colours passes through LCD panels, producing three individual images, which are transmitted through a prism and combined into the final full-colour image.



Longer Light Hours – Up to 20,000 Hours of Maintenance-free Use

Engineered with inorganic LCD panels and an inorganic phosphor wheel, this newly designed laser light source delivers 20,000 hours[^] of maintenance-free use. And with the advanced electrostatic filter having an equally long-lasting life. Cut down on the frequency of lamp replacements, saving you time and money, and lowering the total cost of ownership.



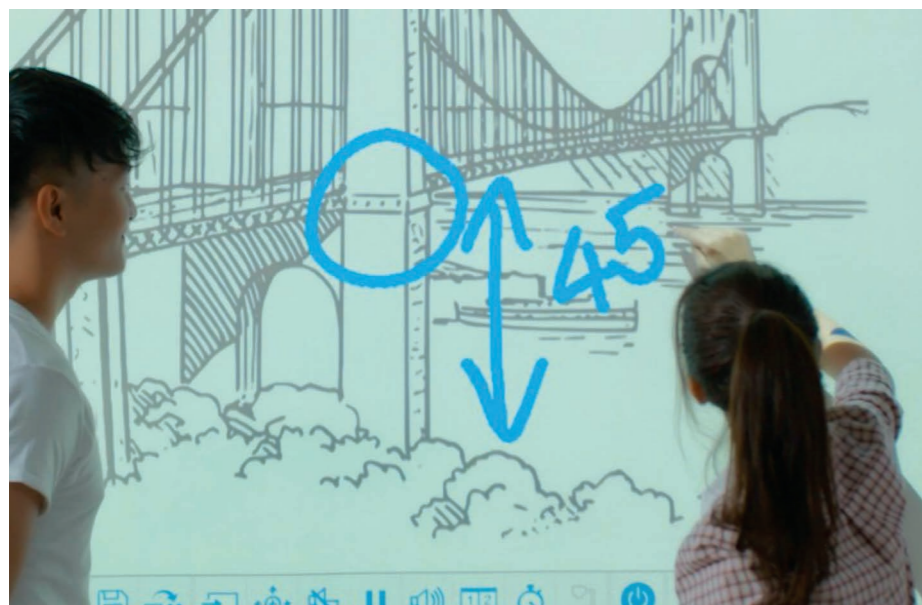
[^] Compared with other conventional lamp projector that has lamp life of 4000 hours.



[^] Approximate time until brightness decreases 50% from first usage. Measured by acceleration test assuming use of 0.04 - 0.20 mg/m3 of particulate matter. Time varies depending on usage conditions and environments.

Making Classroom Learning More Fun

Epson interactive projector has inspired students at Van Lang University in Ho Chi Minh through an engaging and interactive learning experience



Van Lang University, headquartered in Ho Chi Minh City, has always been open to technology in education. Now, others are beginning to take notice. The institution's use of interactive projectors in its classrooms has become something of a social media phenomenon.

A video showing the projectors being used by teachers and students has garnered over 20,000 likes on Facebook with some commenting about how the classrooms now look like something out of a sci-fi movie. The university's embracing of innovation has contributed to its ability to cater to over 20,000 students across 30 majors.

"We aim to actively inspire changes in lifestyle and the way students think," says Đoàn Thị Kiều Oanh, also known as Sarah, an English teacher at the university. "We hope that our instruction drives students to careers in research and fortifies the communities in which they work and live."

With this goal, Van Lang University has installed Epson's projectors across its campus. The institution makes use of 120 units of the Epson EB-2042 projector, 20 units of the EB-585W ultra-short throw projector, and five units of the EB-695Wi interactive projector. There are a number of reasons why Epson's interactive projectors have become such an integral part of Van Lang University's classrooms.

“We hope that our instruction drives students to careers in research and fortifies the communities in which they work and live.”

Epson's interactive projectors are designed to elevate the experience of viewing information on a screen. It instantly turns any flat surface, whether that's a wall or a whiteboard, into an interactive display. You can use your fingers to control elements on the display, draw figures, annotate text, and a lot more. As Sarah puts it, "It's like an iPad – a huge iPad that an entire classroom



can work on and learn from at once."

A key factor to the success in the adoption of the interactive projectors is that they are easy to use, with a user-friendly interface and intuitive functions. "Learning how to use it is not difficult; I went to the Epson website and read the functions, and I was good to go. It was very easy for me to pick up," Sarah says.

Sarah has seen firsthand how using interactive projectors can make lectures more fun and informative to students. "Delivering lessons using these projectors has improved participation rates and engagement in my classes," she reports. "I use the projectors for quizzes and games, and the students have fun taking part in these activities."

The teachers at Van Lang University are excited by the results of using Epson's interactive projectors. Sarah says that other teachers have asked about how they can be used more effectively in classrooms. "I am thinking of having a training workshop to share what I have learned with other teachers," she says.

The improvements will contribute to helping the institution achieve its long-term goals. "By 2025, Van Lang University will become a high-position university in the system of applied orientation universities of Vietnam, equal to other universities in terms of learning environment, scientific research, and technology transfer." Epson's interactive projectors will play a small but important role in helping Van Lang University deliver a quality education to its students and well-rounded individuals to society.

Learning Comes Alive with Epson Interactive Projectors

Epson interactive projector has redefined collaborative learning at a leading children's fitness centre



LEARNING through play has always been the key focus at My Gym, a leading children's fitness centre with a unique programme that helps children develop physically, emotionally and cognitively.

As part of the cognitive learning process, children who participate in My Gym's interactive playgroup programme often engage in art and craft projects, through which they can learn more about objects and their surroundings.

At the centre's Buona Vista branch, for instance, children get a chance to draw and colour images of objects such as fruits and planes using crayon and paper, and learn more about those objects under the guidance of teachers.

In February 2016, Max Lee, director of operations, My Gym @ Buona Vista, raised the level of interactivity for such playgroup programmes by several notches, thanks to Epson projector, the world's first 3LCD finger-touch enabled ultra short-throw interactive projector.

"Our experience with the Epson interactive projector has been awesome. By letting children write and draw simultaneously on the same screen, we can now truly enable real-life interactive learning to enhance our tactile-based learning curriculum," Lee says.

Indeed, the projector was built with onscreen collaboration in mind – its dual pen interactivity and multi-touch capabilities let children and teachers use up to two interactive pens and six fingers to annotate on the same screen at any time.

With dual pen interactivity, children can pre-select their choice of drawing tools and use them anywhere throughout the

whole screen. This greatly enhances the interactive learning process as teachers can assist children with their drawings and move objects together on the screen.

"Through our interactive programme enabled by Epson projector, we can spark a child's natural curiosity and enthusiasm, to provide stimulation for learning and to enable greater retention of information," Lee says.

"The children, who have been fascinated by the projector's true-to-life images, are definitely better engaged during lessons. For the first time, they can now showcase their creativity and bring their artworks to life," he adds.

Besides freeing up the need to prepare physical drawing materials, the projector is also bundled with the SMART Notebook® collaborative learning software.

"Our teachers have been using the SMART Notebook® software to create content and deliver lessons more easily and quickly, and with greater impact. That there's a rich



collection of pre-created interactive lessons included with the software helps a lot too," Lee says.

While the interactive features of the projector have been a big plus, just as important to Lee is the projector's brightness of 3,300 lumens, which he says is just right for his young charges.

Lee says: "The projector offers sufficient brightness in our well-lit playgroup area, but at the same time, the level of brightness is not damaging to the eyes of children."

The colour quality of the projector is just as critical to My Gym, which requires colours to be accurately displayed. "Imagine what would happen if a grain of rice appears yellowish rather than white – the kids may not be able to identify a grain of rice when they see one in real life," Lee says.

For now, teachers and children at My Gym have had no issues with the projector as far as usability is concerned. "The children can easily identify the drawing and colouring tools through the well-designed, intuitive icons, while our teachers have been able to set up the projector on their own.

"The fact that the projector starts up quickly in seconds is really helpful too, as children get distracted easily if there are long pauses during playtime," Lee says.

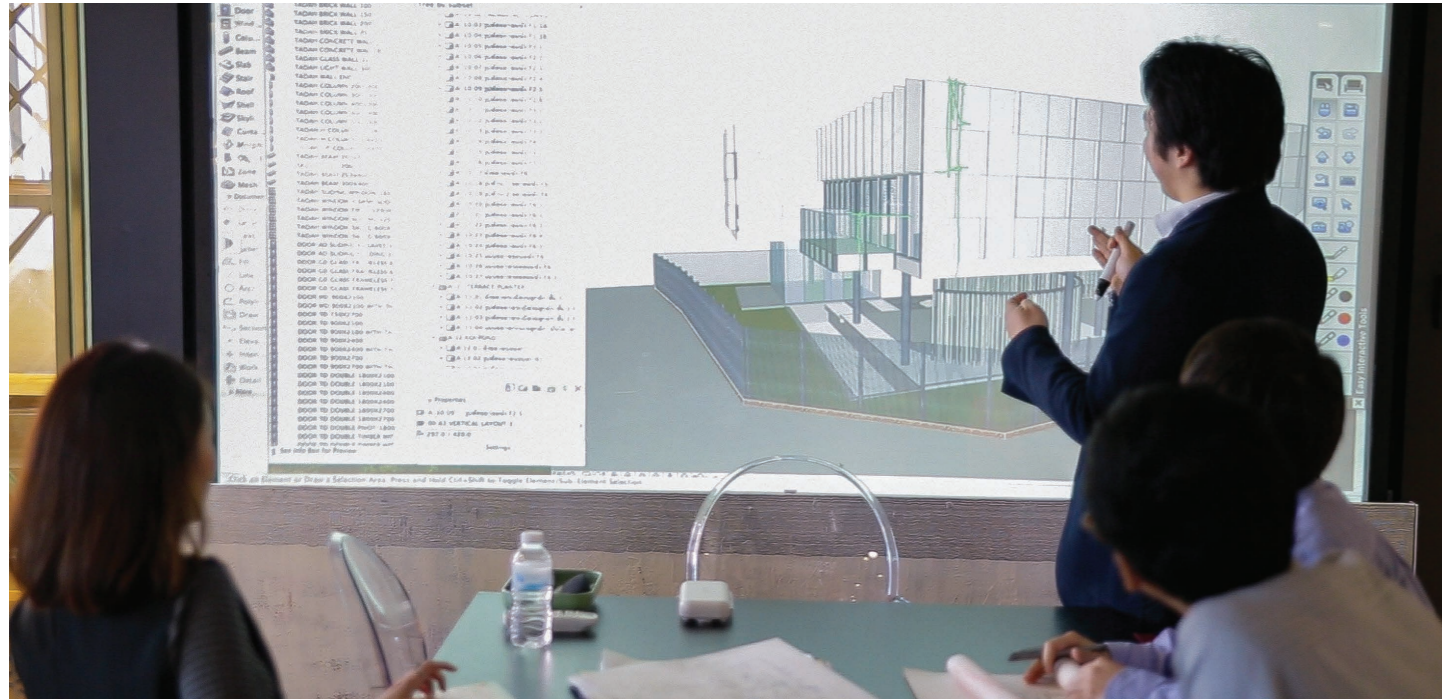
For teachers, the projector makes their jobs easier since they can now project images wirelessly from their mobile devices and laptops without fiddling with connectors and messy cables. "Teachers can also print out the onscreen drawings for the children to bring home," Lee says.

The projector's ultra-short throw advantage also allows My Gym to position the projector closer to the screen, while drastically reducing shadow interference and obstruction. For the first time, teachers can present content without having light beams shining on their faces, making teaching more pleasant.

All in all, Epson projector has been a godsend to My Gym. "Besides fostering creativity among children, there's now a lesser need to purchase physical art materials. The projector has also shortened the time it takes to prepare our lessons, and we're seeing improvements in productivity," Lee says.

Redefining Meetings in the Digital Age

Epson's 3LCD interactive projectors have enabled more productive and engaging discussions at Tadah Collaboration Architects



"With the interactive pens, I can just capture the sketch, and print or save it into a document," Sangthrong says. "Now, we have a document of our design process in digital format."

He adds: "Rather than working on paper, we now work on the big screen. I can present the big picture of the project so my team can better understand my design intentions".



ARCHITECT Pholkrit Sangthrong used to sketch drawings on pieces of paper while collaborating with his team to design a new building.

And after a discussion, his team of designers and architects at Thailand Tadah Collaboration Architects would snap pictures of those drawings to record them.

That cumbersome method of working with colleagues and digitising drawings has given way to a more productive way of collaboration – through Epson's 3LCD interactive projectors.

Epson's interactive projectors can turn any smooth surface into an interactive whiteboard, allowing users to use their fingers and interactive pens to sketch on the projected screen, making it as simple as using a smartphone.

With wireless PC connectivity, Epson's interactive projectors have also enabled Sangthrong's team to pull out information from the Internet and print-out easily during meetings. "They have changed the way we work," he says.

Tadah's clients were just as impressed with Epson's interactive projectors, which feature an ultra short throw distance that reduces shadow interference.



"When I stand in front of the projector to present our project, it doesn't cast my shadow onto the screen. Our clients wondered how that could be possible," Sangthrong says. "I think that has impacted how our clients made their decisions to engage us to design their work."

In addition, the ultra short-throw advantage lets businesses project images in tight spaces, such as a retail window display. They can also even transform a table into an interactive screen, letting employees collaborate on the fly without the need to book a meeting room.

“With the interactive pens, I can just capture the sketch, and print or save it into a document.”

PROJECTOR WISHES COME TRUE.

EPSON 3LCD PROJECTORS

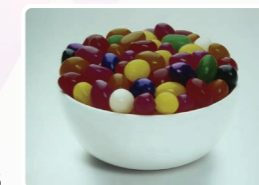
1-CHIP PROJECTORS



Up to **3x**
Brighter Colours
with Epson Projectors*

TRUE BRIGHTNESS

WHITE 3000 LUMENS
COLOUR 3000 LUMENS



WHITE 3000 LUMENS
COLOUR 430 LUMENS**



NO RAINBOW EFFECT

TRUE COMFORT

LIGHT SOURCE PRISM



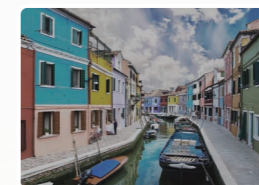
LIGHT SOURCE ROTATING COLOUR WHEEL



UP TO **EX WIDER COLOUR GAMUT**
Epson Projectors

TRUE REALISM

WIDER COLOUR RANGE



SMALLER COLOUR RANGE

TRUE COLOURS

Brighter, vivid projection from Epson.

9 out of 10
PEOPLE
PREFER
IMAGES FROM
EPSON
PROJECTORS



Facebook: EpsonSEA Instagram: @EpsonSEA Twitter: @EpsonSEA YouTube: EpsonSoutheastAsia LinkedIn: Epson Southeast Asia

Find out more at www.epson.com.sg/truecolours



IT'S IN THE DETAILS.

With 3LCD panels, every projection gives you spectacular true colours.

* Leading Epson business and education projectors vs. leading 1-chip DLP® projectors, selected according to NPD data as of July 2015. Based on U.S. research conducted by Radius Research.
** These lumen statistic can be found at www.colorlightoutput.com.
1 Color brightness(color light output) in brightest mode, measured by a third-party lab in accordance with IDMS 15.4. Color brightness will vary depending on usage conditions. Top-selling Epson 3LCD projectors versus top-selling 1-chip DLP® projectors based on NPD sales data for May 2017 – April 2018.
2 Gamut volume in brightest mode, measured by a third-party lab in 3D in the CIE L*a*b* coordinate space. Top-selling Epson 3LCD projectors versus top-selling 1-chip DLP® projectors based on NPD sales data for May 2017 – April 2018.

PROTECT YOUR PROJECTOR. USE GENUINE LAMPS.



Don't compromise on safety – use Epson genuine lamps to avoid damaging your projector. Eliminate the risk of melting parts of your projector, as well as breaks that result in high-voltage shutdown. With a 0% failure rate even after 2,000 hours of usage – compared to 70% in non-genuine lamps – Epson genuine lamps are safer and more reliable. Choose the best possible viewing experience filled with long-lasting sharpness and colour in every projected image with Epson.

DANGERS OF NON-GENUINE LAMPS



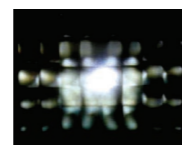
UNRELIABLE

Counterfeit lamps deteriorate and break much faster than genuine ones.



UNSAFE

Parts of your Epson projector such as the housing or wires may melt, disconnect, or become damaged when using non-genuine lamps.



POOR IMAGE QUALITY

Counterfeit lamps may result in inaccurate colour projection, lower brightness levels, as well as flickering images that spoil your viewing experience.

GENUINE EPSON LABEL

To ensure the best quality and safety when using your Epson Projector, look for the “Genuine EPSON Colour Shifting Label” on your projector lamp. Real quality and value, only with Epson genuine supplies.



SPECIFICATIONS EB-536Wi

MODEL NUMBER	EB-536Wi		
Projection Technology	RGB liquid crystal shutter projection system (3LCD)		
Specifications of Main Parts			
LCD	Size	0.59" with MLA (D8)	
	Resolution	WXGA	
	Projection Lens	Type	No Optical Zoom / Focus (Manual)
		F-Number	1.60
	Focal Length	6.4mm	
	Zoom Ratio	1.0 - 1.35 (Digital Zoom)	
Lamp	Throw Ratio	0.48 - 0.65 (Wide - Tele)	
	Type	215W UHE	
	Life (Normal / Eco) ¹	5,000 hours / 10,000 hours	
Screen Size (Projected Distance)			
Zoom: Wide / Zoom: Tele	53" - 116" [0.54 - 1.22 m] / 39" - 86" [0.54 - 1.22 m]		
Brightness²			
White Light Output (Normal / Eco)	3,400lm / 1,900lm		
Colour Light Output (Normal)	3,400lm		
Contrast Ratio	16,000:1		
Internal Speaker(s)			
Sound Output	16W Monaural		
Keystone Correction			
Vertical / Horizontal	±7° / ±5°		
Auto Keystone Correction	Yes (Vertical)		
Connectivity			
Analog RGB Input	D-Sub 15Pin	2 (Blue)	
	Composite	RCA x 1 (Yellow)	
	S-Video	1	
Digital Input	HDMI	1	
Audio Input	RCA (White/Red)	Yes	
	Stereo Mini Jack	2	
USB Input	USB Type A	1 (for USB Memory, USB Document Camera, Wireless LAN, Firmware Update, Copy OSD Settings)	
	USB Type B	1 (for USB Display, Mouse, K/B, Control, Firmware Update, Interactive, Copy OSD Settings)	
Control I/O	RS-232C	D-Sub 9pin x 1	
	Interactive Sync	In x 1; Out x 1	
Video Output	Monitor Out	1	
Audio Output	Stereo Mini Jack	1	
Mic Input	Stereo Mini Jack	1	
Network	Wired LAN	RJ45 x 1 (100Mbps)	
	Wireless LAN	Optional (ELPAP10)	
Interactive Specification			
Interactive Unit			
Supported Screen Size	53" - 116" [0.54 - 1.22 m] (Zoom: Wide) 40" - 86" [0.54 - 1.22 m] (Zoom: Tele)		
Technology	Infrared		
Input Devices	Digital Pen (Easy Interactive Pen A and B)		
Connection To Computer	USB		
Supports Multiple Input Simultaneously	Yes		
Calibration	Auto, Manual (25 Points)		
Pen Unit			
Size	161 x 24 mm Dia. (maximum)		
Weight (Excluding Batteries)	30g		
Side Button	Yes		
PC Free Annotation Tool			
Driver Install	No Need		
Multi Pen Support	Yes, Up To 2 Types Of Pens (Easy Interactive Pen A and B)		
Whiteboard Function	Yes		
Operating Temperature			
	5 - 35 °C [41 - 95 °F] 0 m - 2,286 m / 0 - 7,500 ft 5 - 30 °C [41 - 86 °F] Over 2,286 m / 7,500 ft ; 20% - 80% Humidity, No Condensation		
Operating Altitude			
	0 - 3,000 m [0 - 9,843 ft] Over 1,500 m / 4,921 ft with High Altitude Mode		
Direct Power On / Off			
	Yes		
Start-Up Period			
	Less than 7 seconds, Warm-up period: 30 seconds		
Cool Down Period			
	Instant Off		
Power Supply Voltage			
	100 - 240 V AC ±10%, 50/60 Hz		
Power Consumption (220 - 240V)			
Lamp On (Normal / Eco)	298W / 221W		
Standby (Normal / Eco)	2.1W / 0.28W		
Dimension Excluding Feet (D X W X H)			
	314.5 x 344 x 94 mm		
Weight			
	3.9kg		
Fan Noise (Normal / Eco)			
	37dB / 29dB		

¹ Lamp life will vary depending upon mode selected, environmental conditions and usage. Lamp brightness decreases over time.

² Colour brightness (colour light output) and white brightness (white light output) will vary depending on usage conditions. Colour light output measured in accordance with IDMS 15:4; white light output measured in accordance with ISO 21118.

EPSON
EXCEED YOUR VISION

Supplied Accessories

Power Cable: 4.5m
Remote Control: Yes, with Alkaline AA Battery
Interactive Pen x 1
USB cable: 5m
Software CD-ROM

Optional Accessories

Spare Lamp: ELPLP87
Air Filter: ELPAF47
Soft Carrying Case: ELPKS66
Wireless LAN Unit: ELPAP10 (with updated firmware)
Remote Control Cable Set:
ELPKC28 (10m x 2) (For synchronization of interactive IP)
USB Extension Cable: ELPKC31
Interactive Pen Extension: ELPPE02
Short Throw Wall Mount: ELPMB45

EB-536Wi



©2020 Epson Singapore Pte Ltd. All Rights Reserved. Reproduction in part or in whole, without the written permission from Epson, is strictly prohibited.

EPSON and EXCEED YOUR VISION are registered trademarks of Seiko Epson Corporation.

All other product names and other company names used herein are for identification purposes only and are the trademarks or registered trademarks of their respective owners.

Epson disclaims any and all rights in those marks. Projected images shown herein are simulations. The actual product design and contents may vary. Specifications are subject to change without notice and may vary between countries. Please check with local Epson offices for more information.

Apple, iPad and iPhone are trademarks of Apple Inc., registered in the U.S. and other countries. App Store is a service mark of Apple Inc.

Android is a trademark of Google Inc.

Dealer's Stamp

Information correct at time of printing.
Printed January 2020

Sales Enquiries
800 120 5564

[f](#) EpsonSEA [@EpsonSEA](#) [@EpsonSEA](#) [EpsonSoutheastAsia](#) [Epson Southeast Asia](#)

For latest specifications, visit www.epson.com.sg/interactive or call +65 800 120 5564.

www.epson.com.sg/projectorlamp

Epson Singapore Pte Ltd 1 Harbourfront Place, #03-02 HarbourFront Tower One, Singapore 098633. Tel: (65) 6586-5500 Fax: (65) 6271-9755

Epson Customer Care Centre 108 Pasir Panjang Road, #04-08 Golden Agri Plaza, Singapore 118535. Epson Helpdesk: 800 120 5564. Operating hours: Monday - Friday, 9am - 6pm, Saturday, 9am - 1pm. Closed on Sunday and Public Holiday.

SPECIFICATIONS
EB-695Wi/685Wi

MODEL NUMBER	EB-695Wi	EB-685Wi
Projection Technology	RGB liquid crystal shutter projection system (3LCD)	
Specifications of Main Parts		
LCD	Size	0.59" (D9, C2Fine)
	Resolution	WXGA
Projection Lens	Type	No Optical Zoom / Focus (Manual)
	F-Number	1.60
	Focal Length	3.7mm
	Zoom Ratio	1.0 - 1.35 (Digital Zoom)
	Throw Ratio	0.28 - 0.37 (Wide - Tele)
Lamp	Type	250W UHE
	Life (Normal / Eco / Eco2) ¹	5,000 hours / 10,000 hours / 9,000 hours
Screen Size (Projected Distance)	60" - 100" [35.4 - 60.1 cm] 74.3" screen 44.3cm	
Brightness²		
White Light Output (Normal / Eco)	3,500lm / 2,900lm	
Colour Light Output	3,500lm	
Contrast Ratio	14,000:1	
Internal Speaker(s)		
Sound Output	16W Mono	
Keystone Correction		
Vertical / Horizontal (Zoom : Tele)	±3° / ±3°	
Quick Corner	Yes	
Connectivity		
Analog Input	D-Sub 15Pin	2 (Blue)
	Composite	RCA x 1 (Yellow)
Digital Input	HDMI	3 (HDMI1 in common with MHL)
Output Terminal	D-Sub 15Pin	1 (Black) In common with Computer ²
Audio Input	Stereo Mini Jack	3
Audio Output	Stereo Mini Jack	1
Others	USB Type A	1 (for USB Memory, USB Document Camera, Firmware Update, Copy OSD Settings)
	USB Type B	1 (for USB Display, Mouse, K/B, Control, Firmware Update, Interactive, Copy OSD Settings)
Control I/O	Microphone Input	1
	RS-232C	D-Sub 9pin x 1
	Interactive Sync	Stereo Mini Jack IN x 1, OUT x 1
Network	Touch Unit Control	Yes
	Wired LAN	RJ45 x 1 (100Mbps)
	Wireless	Optional (ELPAP10)
Wireless Specifications		
Supported Speed For Each Mode	IEEE 802.11b: 11 Mbps ³ IEEE 802.11g: 54 Mbps ³ IEEE 802.11n: 130 Mbps ³	
Wireless LAN Security		
WPA/WPA2-Personal (with optional ELPAP10)		
Interactive Specification		
Interactive Unit Technology		
Input Devices	Interactive Pen	Infrared
	Fingers	Digital Pen (Easy Interactive Pen 1.2)
Connection To Computer	Finger (1-6 fingers)	Finger (1-6 fingers)
Calibration	USB, Network	Pen: Auto / Manual (25points) Finger: Manual (16points)
Functions	Pen: Auto / Manual (25points)	Pen: Auto / Manual (25points)
Touch Unit	Hover, Right Click, Auto Adjust Pen Area	Hover, Right Click, Auto Adjust Pen Area
Maximum Dimension (D x W x H)	51 x 210 x 95 mm	N/A
Weight	450g	N/A
Operating Temperature		
Single Use	5 - 40 °C [41 - 104 °F] (0 - 2,286 m / 0 - 7,500 ft) 5 - 35 °C [41 - 95 °F] Over 2,286 m / 7,500 ft 20% - 80% Humidity, No Condensation	
Multi-projection Use	5 - 35 °C [41 - 95 °F] (0 - 2,286 m / 0 - 7,500 ft) 5 - 30 °C [41 - 86 °F] Over 2,286 m / 7,500 ft 20% - 80% Humidity, No Condensation	
Operating Altitude		
Direct Power On / Off	Yes	
Start-Up Period	About 8 seconds, Warm-up Period: 30 seconds	
Cool Down Period	Instant Off	
Air Filter	Type	Electrostatic Filter
	Maintenance Cycle ⁴	5,000 hours (Power Consumption: Normal) 10,000 hours (Power Consumption: Eco)
Power Supply Voltage		
Power Consumption (220 - 240V)	354W / 309W	
Lamp On (Normal / Eco)	2.3W / 0.37W	
Standby (Network On / Off)	400 x 367 x 149 mm	
Dimension Excluding Feet (D X W X H)	Approx. 5.8kg	
Weight	35dB / 30dB / 29dB	
Fan Noise (Normal / Eco / Eco2)		

¹ Lamp life will vary depending upon mode selected, environmental conditions and usage. Lamp brightness decreases over time.

² Colour brightness (colour light output) and white brightness (white light output) will vary depending on usage conditions. Colour light output measured in accordance with IDMS 15:4; white light output measured in accordance with ISO 21118.

³ Maximum speed and range is achievable when used with same enhanced mode technology. Actual data rates, features and performance may vary depending on your computer system, the environment and other factors.

⁴ When used in the general office environment (the amount of floating dust: 0.04 - 0.2 mg/m³). Based on the Epson's in-house test results.

EPSON
EXCEED YOUR VISION

Supplied Accessories

Power Cable: 4.5m
USB Cable: 5m
Remote Control with Battery Attached
Interactive Pens: 2 Pens with AA Battery
Pen Tray
Setting Plate
Light Curtain Unit (EB-695Wi)
Light Curtain Unit Bracket (EB-695Wi)
Pen Tip (Soft [Felt]): 4
Pen Tip (Hard [Teflon]): 2
Pen Tip Holder
Password Protect Sticker

Optional Accessories

Spare Lamp: ELPLP31
Air Filter: ELPAF49
Wireless LAN Unit: ELPAP10
Remote Control Cable Set: ELPKC28 (10m x 2) (for synchronization of Interactive IR)
Setting Plate: ELPMB46 / ELPMB43 / ELPMB28
Table Mount Bracket: ELPMB29
Easy Interactive Pen 1 (Orange): ELPPN05A
Easy Interactive Pen 2 (Blue): ELPPN05B
Replacement Hard Pen Tips: ELPPS03 for ELPPN05 (Hard)
Replacement Soft Pen Tips: ELPPS04 for ELPPN05 (Soft)

EB-695Wi



EB-685Wi



©2020 Epson Singapore Pte Ltd. All Rights Reserved. Reproduction in part or in whole, without the written permission from Epson, is strictly prohibited.

EPSON and EXCEED YOUR VISION are registered trademarks of Seiko Epson Corporation.

All other product names and other company names used herein are for identification purposes only and are the trademarks or registered trademarks of their respective owners.

Epson disclaims any and all rights in those marks. Projected images shown herein are simulations. The actual product design and contents may vary. Specifications are subject to change without notice and may vary between countries. Please check with local Epson offices for more information.

Apple, iPad and iPhone are trademarks of Apple Inc., registered in the U.S. and other countries. App Store is a service mark of Apple Inc.

Android is a trademark of Google Inc.

Dealer's Stamp

Information correct at time of printing.
Printed January 2020

SPECIFICATIONS
EB-1485Fi

MODEL NUMBER	EB-1485Fi	
Projection Technology	RGB liquid crystal shutter projection system	
Specifications of Main Parts		
LCD	Size	0.62" (C2Fine)
	Resolution	1080p (1366 x 768 x 2)*
Projection Lens	Type	No Optical Zoom / Focus (Manual)
	F-Number	1.50
	Focal Length	3.9mm
	Zoom Ratio	1.0 - 1.35 (Digital Zoom)
	Throw Ratio	0.27 - 0.37 (Wide to Tele)
Light Source	Type	Laser Diode
	Life (Normal / Eco / Extended)	20,000 / N/A / 30,000 hrs
Screen Size (Projected Distance)	65"-100" [39.2-61.3 cm] @ 16:9 ; 61"-120" [39.2 - 79.6 cm] @ 16:6	
Brightness¹		
White Light Output (Normal / Quiet)	5,000lm / 3,500lm	
Colour Light Output	5,000lm / 3,500lm	
Contrast Ratio	Over 2,500,000 : 1	
Internal Speaker(s)		
Sound Output	8W x 8W Stereo	
Geometric Correction		
Vertical / Horizontal Keystone	±3° / ±3°	
Quick Corner	Yes	
Connectivity		
Analog Input	D-Sub 15Pin	2 (Blue, Black)
	Composite	RCA x 1 (Yellow)
Digital Input	HDMI	3 (HDCP2.3)
	HDBaseT	1 (HDCP2.3)
Analog Output Terminal	D-Sub 15Pin	1 (Black) (in common with Computer 2)
Digital Output Terminal	HDMI	1
Audio Input	Stereo Mini Jack	3
Audio Output	Stereo Mini Jack	1
Others	USB Type A	2 (for USB Memory, Printer, USB Document Camera, Firmware Update, Copy OSD Settings)
	USB Type B	2 (for USB Display, Mouse, K/B, Control, Firmware Update, Interactive, Copy OSD Settings)
	Mic I/O	Stereo Mini x 1
Control I/O	RS-232C	D-Sub 9pin x 1
	Interactive Sync	In x 1, Out x 1
	Touch Unit Control	Mini DIN 8pin x 1
Network	Wired LAN	RJ45 x 1 (100Mbps)
	Wireless	Built-in (Screen Mirroring or WLAN Switchable Usage) x 1 ; USB Type A (In common with Memory I/O) x 1 using Optional Wireless LAN Unit
Wireless LAN - Built-in		
Supported Speed For Each Mode	Infrastructure: IEEE 802.11b (2.4GHz): 11Mbps ² , IEEE 802.11g (2.4GHz): 54Mbps ² , IEEE 802.11n (2.4GHz): 72Mbps ² , IEEE 802.11a (5GHz): 54Mbps ² , IEEE 802.11n (5GHz): 150Mbps ² , IEEE 802.11ac (5GHz): 325Mbps ² Access Point: (Wifi Direct): IEEE 802.11g (2.4GHz): 54Mbps ² , IEEE 802.11n (2.4GHz): 72Mbps ² , IEEE 802.11a (5GHz): 54Mbps ² , IEEE 802.11n (5GHz): 150Mbps ² , IEEE 802.11ac (5GHz): 325Mbps ²	
Supported Mode	Infrastructure, Access Point (Wifi Direct)	
Wireless LAN Security	Infrastructure: OPEN, WPA2 / WPA3-PSK, WPA2 / WPA3-EA ; Access Point (Wi-Fi Direct): WPA2-PSK (AES)	
Miracast		
Supported Speed For Each Mode	Infrastructure: IEEE 802.11b (2.4GHz): 11Mbps ² , IEEE 802.11g (2.4GHz): 54Mbps ² , IEEE 802.11n (2.4GHz): 72Mbps ² , IEEE 802.11a (5GHz): 54Mbps ² , IEEE 802.11n (5GHz): 150Mbps ² , IEEE 802.11ac (5GHz): 325Mbps ² Access Point: (Wifi Direct): IEEE 802.11g (2.4GHz): 54Mbps ² , IEEE 802.11n (2.4GHz): 72Mbps ² , IEEE 802.11a (5GHz): 54Mbps ² , IEEE 802.11n (5GHz): 150Mbps ² , IEEE 802.11ac (5GHz): 325Mbps ²	
Supported Mode	Infrastructure, Access Point (Wifi Direct)	
Screen Mirroring-Built-in		
Supported Speed For Each Mode	Infrastructure: OPEN, WPA2/WPA3-PSK, WPA2/WPA3-EAP ; Supported EAP type: PEAP, PEAP-TLS, EAP-TLS, EAP-Fast ; Access Point(Wi-Fi Direct): WPA2-PSK(AES)	
Wireless LAN Security:		
Supported Speed For Each Mode	Infrastructure: IEEE 802.11b (2.4GHz): 11Mbps ² , IEEE 802.11g (2.4GHz): 54Mbps ² , IEEE 802.11n (2.4GHz): 72Mbps ² , IEEE 802.11a (5GHz): 54Mbps ² , IEEE 802.11n (5GHz): 150Mbps ² , IEEE 802.11ac (5GHz): 325Mbps ² Access Point: (Wifi Direct): IEEE 802.11g (2.4GHz): 54Mbps ² , IEEE 802.11n (2.4GHz): 72Mbps ² , IEEE 802.11a (5GHz): 54Mbps ² , IEEE 802.11n (5GHz): 150Mbps ² , IEEE 802.11ac (5GHz): 325Mbps ²	
Supported Mode	Infrastructure, Access Point (Wifi Direct)	
Wireless Security:		
Supported Speed For Each Mode	Infrastructure: OPEN, WPA2 / WPA3-PSK, WPA2 / WPA3-EAP Supported EAP type: PEAP, PEAP-TLS, EAP-TLS, EAP-Fast ; Access Point (Wi-Fi Direct): WPA2-PSK(AES)	
Interactive Specification		
Interactive Unit Technology		
Input Devices	Interactive Pen	Infrared
	Finger	Digital Pen (Easy Interactive Pen A & B)
Connection To Computer	Finger	Yes (Up to 6 Fingers)
Calibration	USB, Network	Pen: Auto / Manual (25 Points)
Functions	Pen: Auto / Manual (25 Points)	Hover, Right Click, Auto Adjust Pen Area
Pen Unit	Dimension	161 x 24 mm (diameter) maximum
	Weight	30g (Excluding a battery)
Touch Unit	Maximum Dimension (D x W x H)	65 x 422 x 40 mm
	Weight	600g
Operating Temperature⁴		
Single Use	0 - 2,286 m (0 - 7,500 ft): 0 - 40 °C [41 - 104 °F] ; 20% to 80% Humidity, No Condensation Over 2,286 - 3,048 m (7,500 - 10,000 ft): 0 - 35 °C [41 - 95 °F] ; 20%-80% Humidity, No Condensation	
Multi-projection Use	0 - 2,286 m (0 - 7,500 ft): 0 - 35 °C [41 - 95 °F] ; 20% to 80% Humidity, No Condensation Over 2,286 - 3,048 m (7,500 - 10,000 ft): 0 - 30 °C [41 - 86 °F] ; 20%-80% Humidity, No Condensation Over 1,500 m / 4,921 ft, with High Altitude Mode: 0 - 3,048 m (0 - 10,000 ft)	
Operating Altitude		
Direct Power On / Off	Yes	
Start-Up Period	Less than 8 seconds, Warm-up Period: 30 seconds	
Cool Down Period	Instant Off	
Air Filter	Type	Electrostatic Filter
	Maintenance Cycle ⁵	20,000 hours
Power Supply Voltage		
Power Consumption (220 - 240V)	368W / 262W	
Lamp On (Normal / Eco)	2.0W / 0.5W	
Standby (Network On / Off)	375 x 458 x 209.5 mm	
Dimension Excluding Feet (D x W x H)	Approx. 9.7 Kg	
Weight (with cable cover)	36dB / 36dB / 27dB	
Fan Noise (Normal / Extended / Quiet)		

¹ Pixel shifting technology achieves Full HD resolution on screen.

² Colour brightness (colour light output) and white brightness (white light output) will vary depending on usage conditions. Colour light output measured in accordance with IDMS 15:4; white light output measured in accordance with ISO 21118.

³ Maximum speed and range is achievable when used with same enhanced mode technology. Actual data rates, features and performance may vary depending on your computer system, the environment and other factors.

⁴ These modes and actual data throughputs depend on supported wireless mode of source devices and/or environmental conditions.

⁵ When environmental temperature becomes high, the brightness becomes dark automatically.

⁶ When used in the general office environment (the amount of floating dust: 0.04 - 0.2 mg/m³). Based on the Epson's in-house test results.

EPSON
EXCEED YOUR VISION

Supplied Accessories

Power Cable: 1.8m x 1
HCB (HDBaseT Connection and Control Box)
AC Cable for HCB: 1.8m x 1
USB Cable for HCB: 1.8m x 1
Remote Control with Battery Attached
Interactive Pens: 2 pens with AA Battery
Pen Stand: 1
Setting Plate
Pen Tip (Felt): 4
Pen Tip (Teflon): 2
Finger Touch Unit: 1
Corner Marker for Automatic Geometry Adjustment: 4
Lens Cap
Password Protect Sticker
Cable Cover

Optional Accessories

Air Filter: ELPAF56
Remote Control Cable Set: ELPKC28 (10m x 2) (for synchronization of Interactive IR)
Setting Plate: ELPMB62
Wall Mount for FTU: ELPMB63
Easy Interactive Pen 1 (Orange): ELPPN05A
Easy Interactive Pen 2 (Blue): ELPPN05B
Replacement Hard Pen Tips: ELPPS03 (for ELPPN05)
Replacement Soft Pen Tips: ELPPS04 (for ELPPN05)
Wireless LAN unit: ELPAP11
HDBaseT Connection and Control Box: ELPHD02
Finger Touch Unit: ELPFT01

EB-1485Fi



©2020 Epson Singapore Pte Ltd. All Rights Reserved. Reproduction in part or in whole, without the written permission from Epson, is strictly prohibited.

EPSON and EXCEED YOUR VISION are registered trademarks of Seiko Epson Corporation.

All other product names and other company names used herein are for identification purposes only and are the trademarks or registered trademarks of their respective owners.

Epson disclaims any and all rights in those marks. Projected images shown herein are simulations. The actual product design and contents may vary. Specifications are subject to change without notice and may vary between countries. Please check with local Epson offices for more information.

Apple, iPad and iPhone are trademarks of Apple Inc., registered in the U.S. and other countries. App Store is a service mark of Apple Inc.

Android is a trademark of Google Inc.

Dealer's Stamp

Information correct at time of printing.
Printed January 2020

Sales Enquiries
800 120 5564

[f](#) EpsonSEA [@EpsonSEA](#) [@EpsonSEA](#) [EpsonSoutheastAsia](#) [Epson Southeast Asia](#)

For latest specifications, visit www.epson.com.sg/interactive or call +65 800 120 5564.

Sales Enquiries
800 120 5564

[f](#) EpsonSEA [@EpsonSEA](#) [@EpsonSEA](#) [EpsonSoutheastAsia](#) [Epson Southeast Asia](#)

For latest specifications, visit www.epson.com.sg/interactive or call +65 800 120 5564.