



**ESSENTIAL PROJECTORS
FOR EFFECTIVE MEETINGS.**



Enjoy success and unparalleled performance with Epson business projectors. Fully maximise your office space and experience a variety of connectivity options for your ultimate convenience. Along with long lamp-life and maintenance cycles, potential for saving costs and improving energy efficiency is now made possible for you. Every component is skilfully innovated with attention to detail in mind, including the integrated 3LCD technology that will provide you with stunning colour brightness for quality images.



EB-980W/970

- Multi-PC Projection
- Horizontal Keystone Adjuster
- HDMI
- Split Screen
- Environmentally Friendly



IT'S IN THE DETAILS.

3LCD technology that delivers quality projected images and reliable performance.

All-in-One Essentials

Enhance your meetings with features such as flexible placement and versatile connectivity.

Cost-saving Features

Save time and money with 12,000 hours for lamp-life (in eco-mode) and 20,000 hours* for air filter maintenance cycle.

Stunning Colour Brightness

The high colour light output achieves sharp images and dazzling colours that will enhance every presentation.



Enjoy easy mobile presentations with Epson's multimedia projector series. Versatile, user-friendly and equipped with advanced features such as wireless transmission, multi-PC projection and HDMI connection, these projectors deliver smooth and high-contrast presentations whenever and wherever you need.

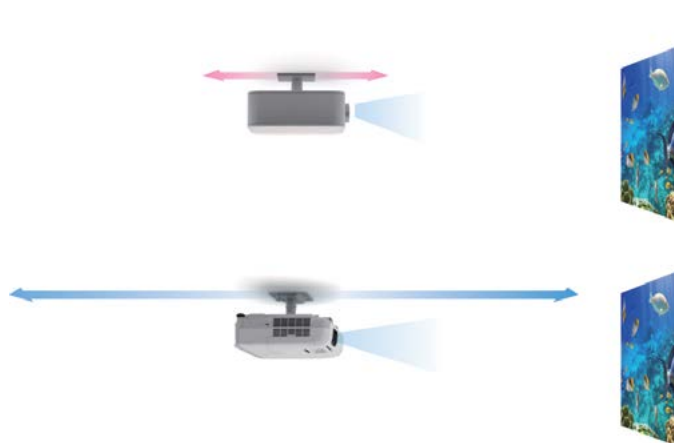


All-in-one Essentials

1.6x Zoom Lens

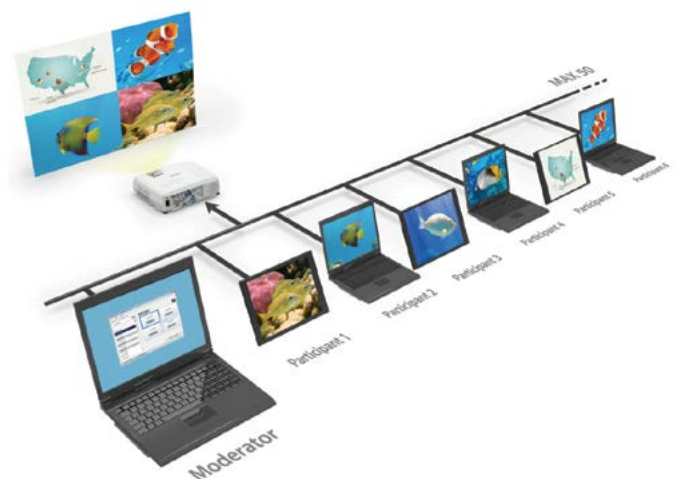
Enjoy greater placement flexibility with 1.6x zoom lens*. With wider lens, you can position the projector closer to the screen to free up valuable room and desk space.

Narrow zoom ratio



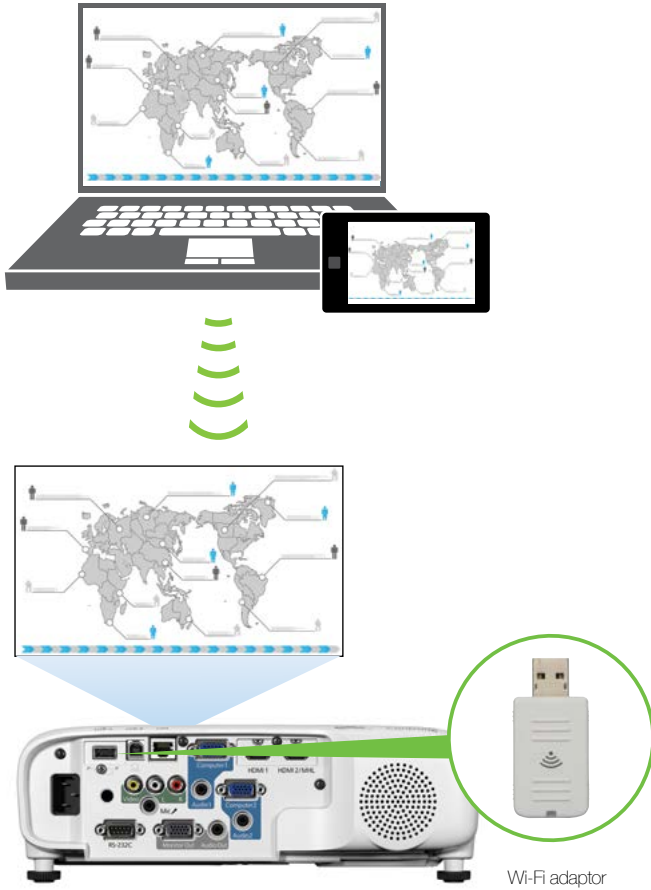
Multi-PC Projection

With the control of a host PC, up to 50 terminals can be connected via the multi-PC projection from a single projector. The host PC acts as a moderator, selecting media from up to four terminals to be projected simultaneously. With the moderator function, you can maintain control and prevent tampering with what's projected on screen.



Wireless Transmission

Enjoy enhanced connectivity and flexibility with Wi-Fi connectivity*. Easily share and transmit images and files from your smart devices using the "Epson iProjection" application for smooth and smart projections. And with an additional attachment piece holding the wireless LAN adaptor in place, your transmissions will never be interrupted.

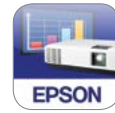


Wi-Fi adaptor

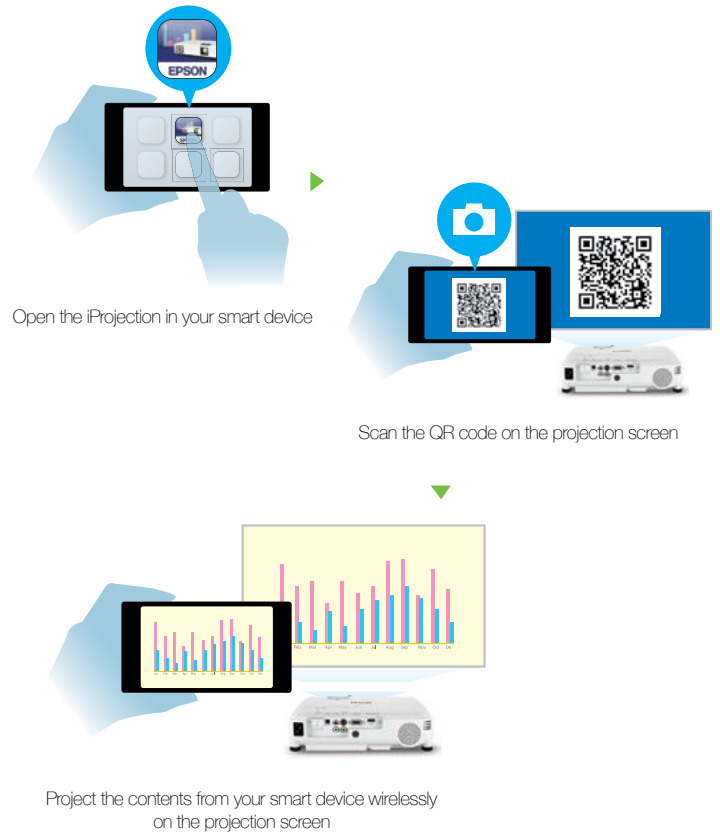
Wireless LAN adaptor ELPAP10 is required.

Epson iProjection

The Epson iProjection application enables a wireless connection for projecting images and files from your smart devices. The new "QR Code Reader" function makes this wireless connection even easier by simply reading the QR code that is projected on the screen from your smart devices.



In iProjection, projector profile search, multi-screen display, distribution function, audio transfer, movie file transfer, interrupt connection disabling and encryption data transfer capabilities are not supported.



Open the iProjection in your smart device

Scan the QR code on the projection screen

Project the contents from your smart device wirelessly on the projection screen

High Contrast Ratio

Add brilliance to your presentations. Boasting stunning brightness of up to 4000 lumens and a high contrast ratio of 15000:1, these projectors enable you to project beautiful, well-defined images wherever you are, regardless of ambient light.



Horizontal Keystone Adjuster

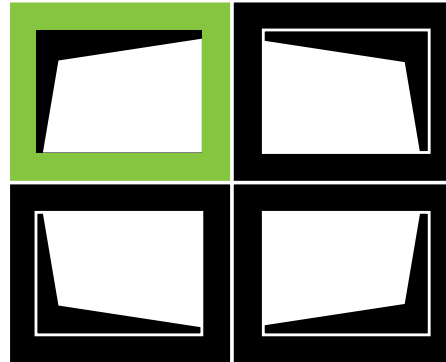
Deliver powerful presentations anywhere in the room. With the easy-to-use sliding Horizontal Keystone Adjuster, screen corrections can be done quickly, easily and accurately, even in a limited space.

With automatic vertical keystone detection and adjustment, there is no longer any need for awkward and time-consuming manual image adjustments that interrupt the smooth flow of your presentation delivery. This handy feature automatically detects the projector's vertical keystone distortion and corrects it instantly.

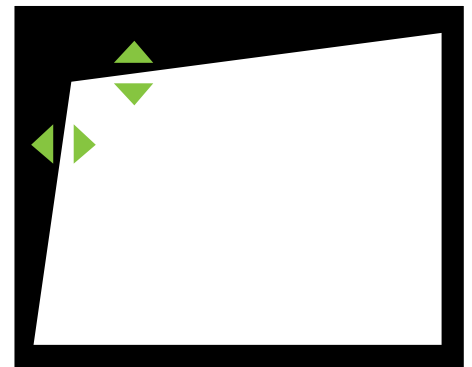


Quick Corner

With the quick corner feature, you can use the keystone correction and lens shift function simultaneously for maximum projection without having to worry about unintentionally changing the aspect ratio.



Select where to correct



Use arrow keys to correct

Split Screen

Display images from two different sources side by side on the same screen for a more effective presentation. In video conferences, for example, images of presentation materials and remote participants can be shown simultaneously. What's more with Digital x Digital compatibility, you'll enjoy sharper, more vibrant projections.



Superior Sound Quality

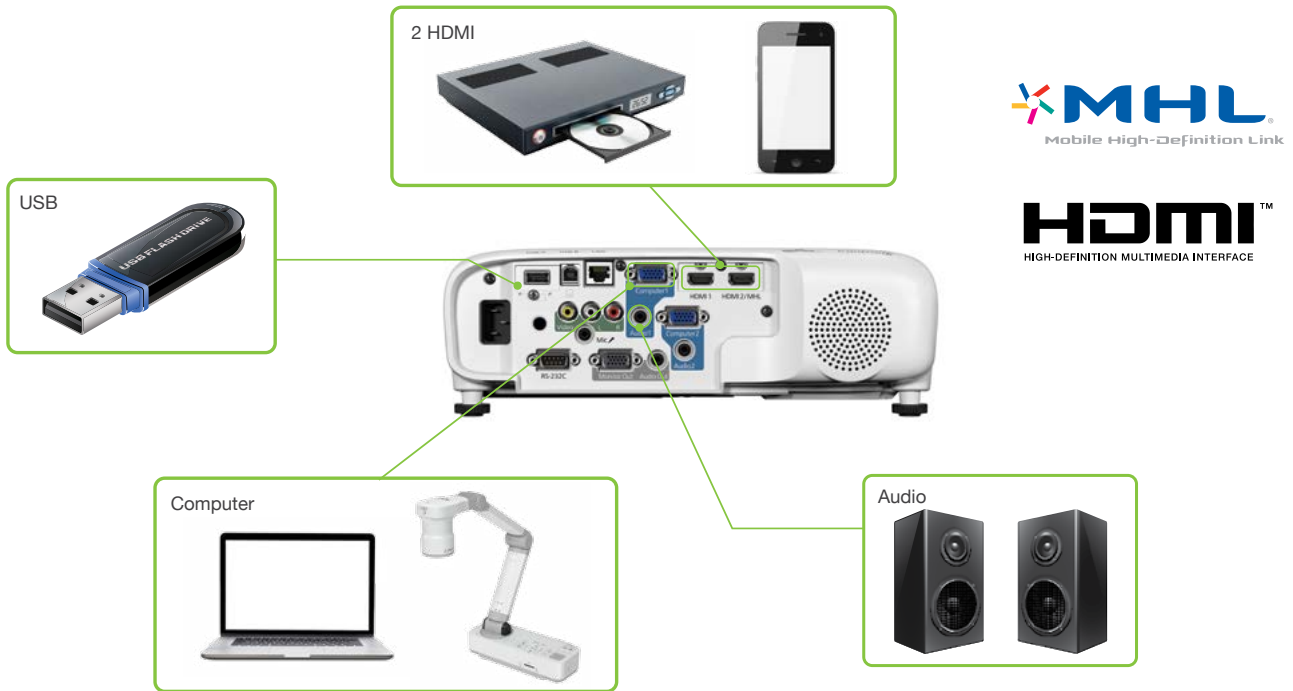
The built-in 16W speaker provides ample sound even in large rooms, removing the need for external speakers to save you valuable time and money.



Wide-ranging Connectivity

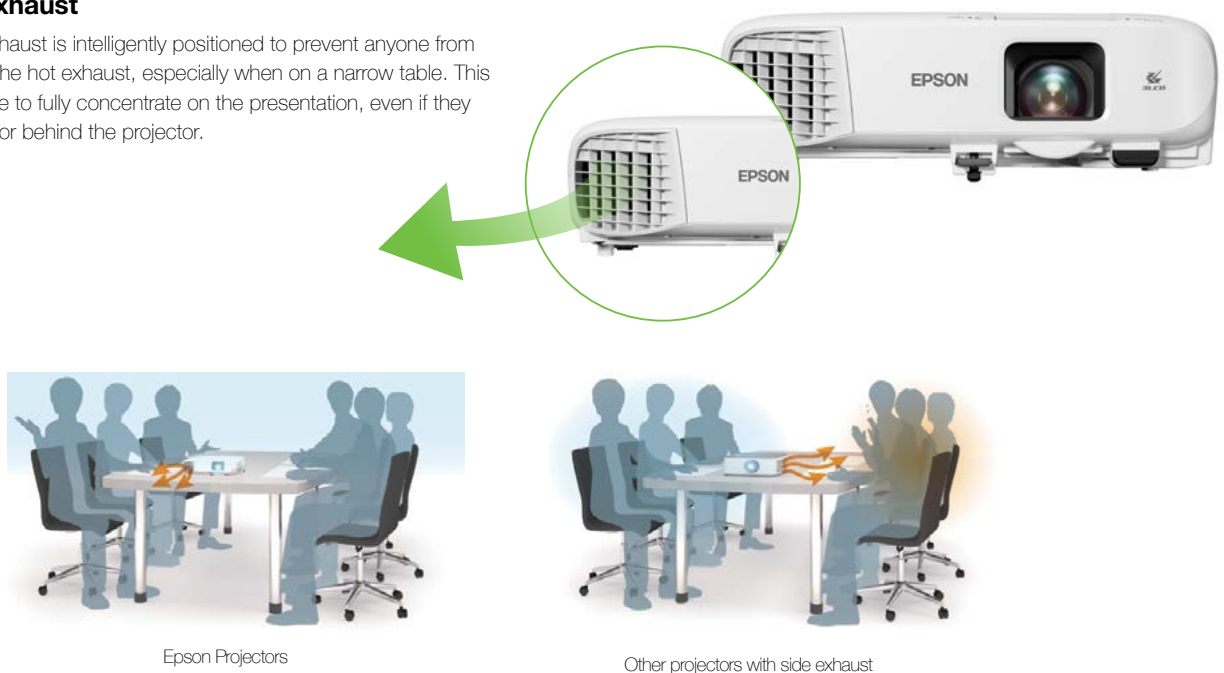
Advanced connectivity features mean convenient and hassle-free projections of your presentations. With a wide-ranging interface, you can choose from a variety of connection methods including HDMI, VGA and LAN. In addition, these projectors are equipped with two HDMI ports*, one of which is MHL-enabled*, for greater digital compatibility.

Simply connect your MHL-compatible device with the MHL cable to fully enjoy your contents on the big screen. What's more, when connected, you can charge your smart device and operate it using the projector's remote control.



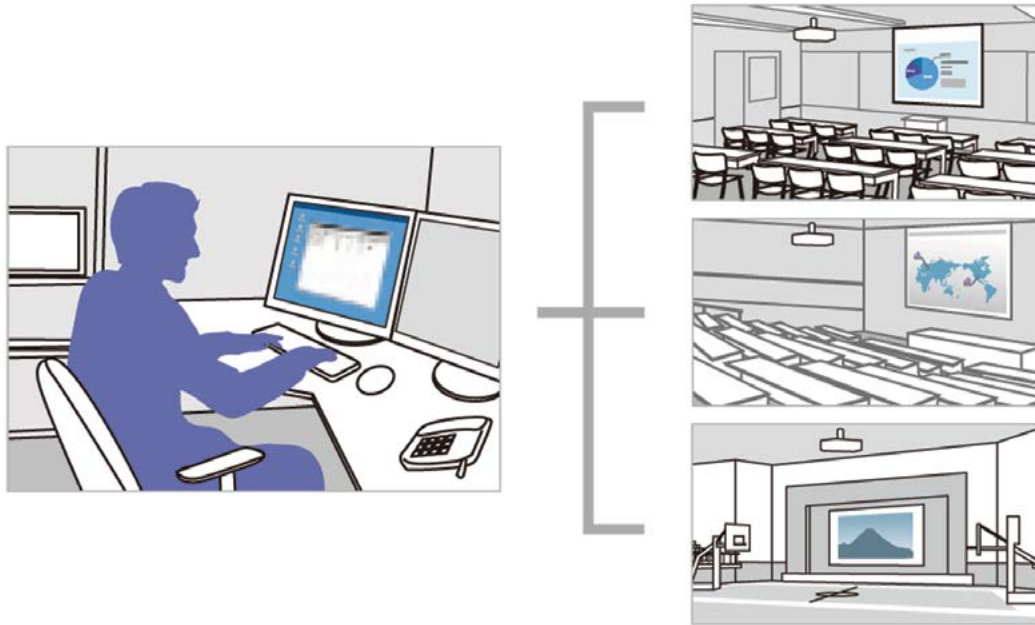
Redirected Exhaust

The front-facing exhaust is intelligently positioned to prevent anyone from being exposed to the hot exhaust, especially when on a narrow table. This allows the audience to fully concentrate on the presentation, even if they are seated beside or behind the projector.



Epson Projector Management

With Epson's network monitoring and control software, you can see from a single PC which projectors are available and whether they are running efficiently – even across the biggest networks. You can configure your projectors and access their serial numbers remotely, as well as receive instant email alerts for pre-defined critical indicators such as non-functioning devices or overheating lamps. Each projector's serial number can also be accessed remotely via LAN/serial connection.



Home Screen

View and access your most frequently used functions immediately on the home screen. See all source information at a glance, no matter what the source input. With all the information you need right there on the home screen, wireless connections have never been easier.



Easy-to-replace Lamps

With the lamp cap located on the upper side of the projector, you can change lamps easily even if the projector is installed on the ceiling. Lamps can be replaced quickly without tools and dismounting of the projector from the ceiling mount.



Auto Power On

With the auto power on function, projection starts automatically once a projection signal is detected via HDMI, VGA and USB cable, providing you with an easy and hassle-free presentation.



Firmware Updates

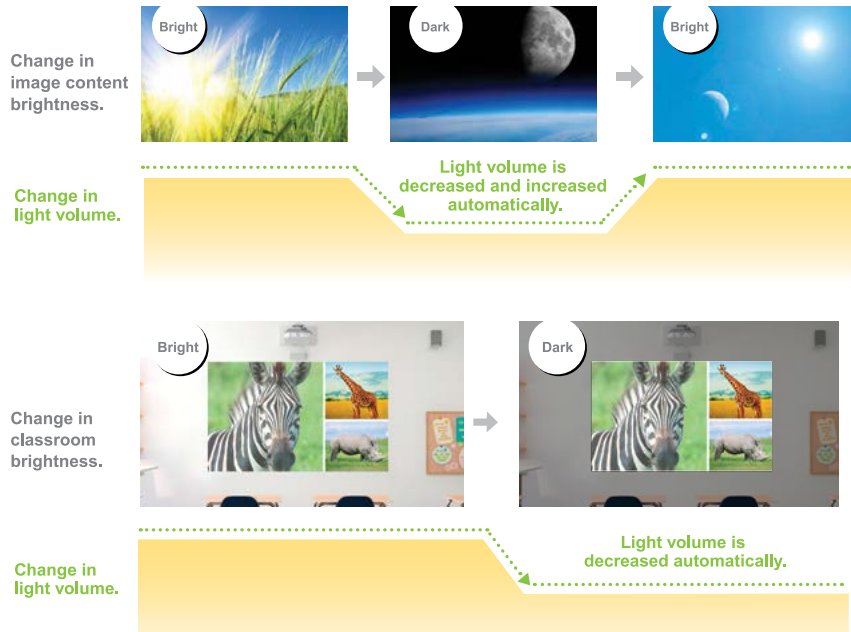
Easily update your projector's firmware without having to take it to a service center. To update, simply insert a USB memory stick with the necessary software. Updates can also be done over LAN network or via a USB-B connection.



Cost-saving Features

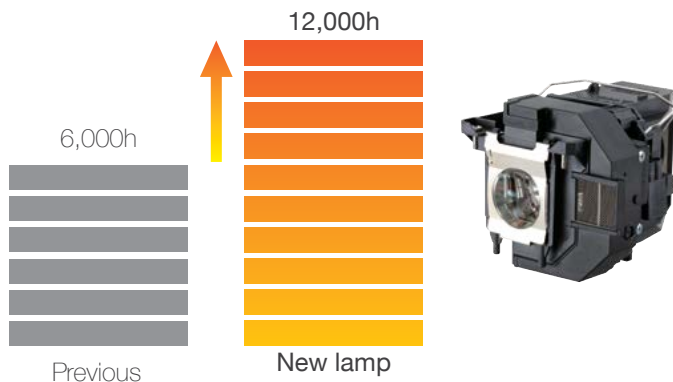
Light Optimiser

Save energy consumption and do your part for the environment with the new eco-friendly auto-brightness adjustment. The luminance sensor detects the brightness level of the environment and adjusts the projector's brightness automatically, giving you power and cost savings. This function can be turned on/off according to your preference.



Longer Lamp Life

With a long lamp life of 12,000 hours in eco-mode, the frequency of costly lamp replacements is reduced, saving you time and money.



Air Filter

With a maintenance cycle of 20,000 hours in eco-mode, the need for regular maintenance of the air filter is minimised to save you time and money.



ELPAF54 is for EB-970 & EB-980W.

Better Products for a Better Future™

For more information on Epson's environmental programmes, visit <http://global.epson.com/SR/environment>.



Eco Features

- Uses just 0.2W of power in standby mode
- Projector optics employ lead-free lenses
- Unpainted plastic housing reduces the environment impact
- The flame retardants used in the plastic housing do not contain chlorine or bromine

PARTNERS IN PERFECTION

Wireless LAN Adaptor ELPAP10



Supports 802.11 b/g/n connection
 Compatible with all Epson wireless-enabled projectors

Desktop Document Camera ELPDC21



2.6kg
 2 megapixels with 30 fps
 12 x optical zoom
 1080p output resolution
 HDMI digital connectivity

Ink Tank System L405



Ultra-high page yields of 7,500 for colour and 4,500 for black
 Wi-Fi and Wi-Fi Direct connectivity
 Warranty up to 2 years or 30,000 prints, inclusive of printhead

SEE VIBRANT, REALISTIC COLOURS WITH HIGH COLOUR BRIGHTNESS.

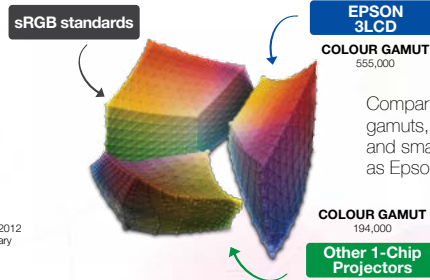


See colours like never before. Epson 3LCD projectors deliver brilliant colours that match its white brightness to give you balanced, realistic, and vibrant images. It's no wonder Epson projectors are the people's preferred choice.



Up to 3X Wider Colour Gamut

Colour gamut refers to the range of colours that can be reproduced by a display device – the wider the gamut, the more realistic it is. Epson 3LCD projectors project three times wider gamut that matches closely to the original standard of a display device (sRGB), as compared to 1-chip projectors.

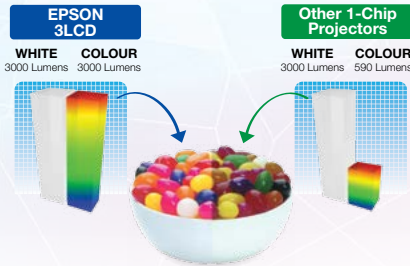


Comparing the yellow corners among the three gamuts, 1-chip projectors have a distinctly darker and smaller set of colours which are not as vibrant as Epson 3LCD projectors.

*Compared against similarly-priced leading 1-chip DLP® business and education projectors based on NPD data from July 2011 through June 2012 (available from www.npd.com). Colour brightness (colour light output) measured in accordance with IEC61545. Actual colour brightness will vary depending on actual usage conditions. 3LCD® is a registered trademark of Seiko Epson Corporation. DLP® is a registered trademark of Texas Instruments, Inc. and its use here does not imply any affiliation with or endorsement by them.

Up to 3X Brighter Colours

Epson 3LCD projectors deliver up to three times the colour brightness, effortlessly creating the same colour and white brightness, resulting in faithful images with superior colour balance.



No Rainbow Effect



With 1-chip projectors, the spinning motion of the sequential colour wheels tend to cause colours to break out into distinct red, green and blue. Called the rainbow effect, this may cause users to suffer headaches with prolonged viewing. Epson projectors do not give out this effect, giving users a comfortable experience.



www.epson.com.my/colourbrightness

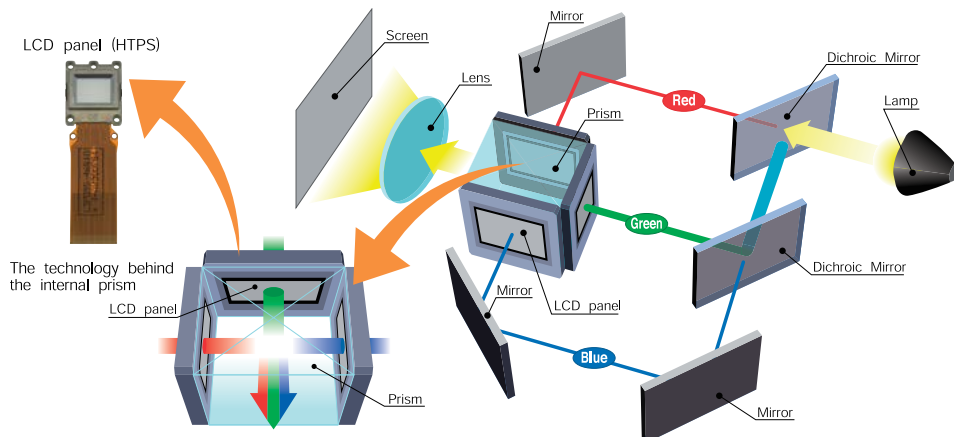
EPSON 3LCD TECHNOLOGY – FOR BRIGHT, FAITHFUL COLOURS

3LCD projectors offer brighter and more accurate colours as they produce different shades and hues by filtering the single white light beam through a colour wheel, then mixing beams of the three primary colours (red, green and blue).

In a 3LCD projector, white light is first split into the three beams of primary colours. Each beam is then filtered through its own LCD that will give each individual pixel of the image its exact brightness for each colour. The colour beams are then perfectly recombined in a prism before being projected out as a complete image.

This compares to projectors using single-chip technology that actually project individual colours sequentially by filtering their single white light beam through a colour wheel, and then relying on human colour perception to combine the colours in the viewers' minds.

As a result, 3LCD projectors also offer greater detail, smoother gradations, no "colour breakup" effect, are easier on viewers' eyes, and consume about 25% less power to achieve the same brightness compared to a single-chip projector using a lamp of the same wattage.



3LCD projector : RGB are projected at the same time, which makes the single composite image easy on the eyes.

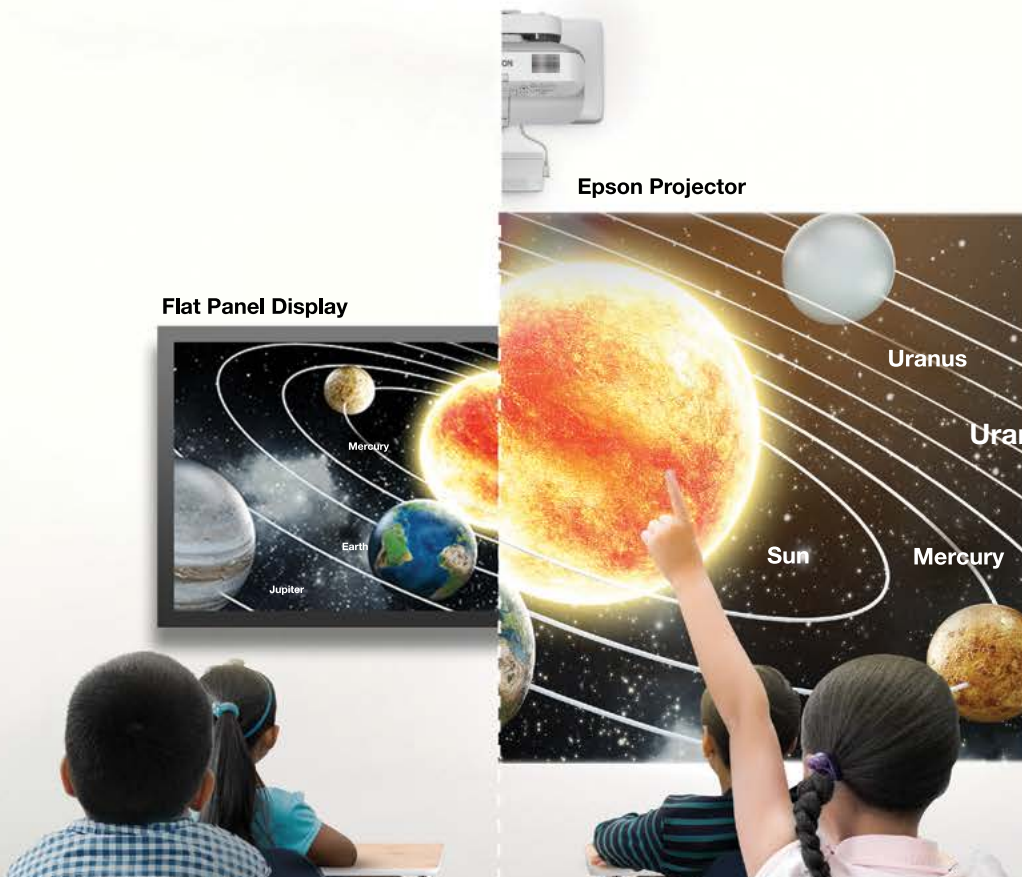
• An independent test by projector review media ProjectorCentral.com in 2009 of about 800 projectors found that on average, 3LCD projectors use 25% less power than single-chip projectors.



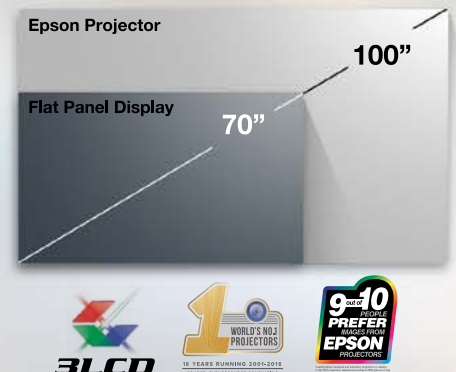
www.3lcd.com

BIGGER PROJECTION. BRIGHTER FUTURE.

“More than half of the students are unable to read certain contents displayed on a 70" flat panel display.”
- Radius Research.



58% of students from US, 61% from UK, and 57% from Singapore are unable to read contents on a 70-inch flat panel display*. This is why our projectors depict larger and more immersive pictures, so you can maximise learning and engage the brightest minds of our future. Experience the real practical difference today.



*Based on research conducted by Radius Research in US, UK and Singapore. The research was done using a 70-inch class 4k resolution flat panel in a 22' x 27' / 22' x 26' / 22' x 30' classroom-style arrangement respectively. When asked to copy down six short items of information from slides displayed, 58% of students from US, 61% from UK, and 57% from Singapore, aged 12-22, copied at least one item incorrectly.

www.epson.com.my/displaysizematters

To find out more, call 1800-81-7349 (Toll-Free).

Join us EpsonMalaysia

MODEL NUMBER	EB-970	EB-980W
Projection Technology	RGB liquid crystal shutter projection system	
Specifications of Main Parts		
LCD Size	0.63" (D10)	0.59" (D9)
Native Resolution	SVGA	WXGA
Projection Lens	Type	Optical Zoom (Manual) / Focus (Manual)
	F-Number	1.51-1.99
	Focal Length	18.2 - 29.2 mm
	Zoom Ratio	1-1.6
	Throw Ratio	1.38 - 2.24 (Wide - Tele)
Lamp	Type	210W UHE
	Life (Normal / Eco) ¹⁾	6,000 hours / 12,000 hours
Screen Size (Projected Distance)		
Zoom : Wide	30" - 300" [0.83 - 8.54 m]	29" - 280" [0.85 - 8.45 m]
Zoom : Tele	30" - 300" [1.36 - 13.86 m]	29" - 280" [1.40 - 13.71 m]
Standard Size	60" screen 1.69 - 2.75 m	60" screen 1.79 - 2.92 m
Brightness²⁾		
Colour Light Output (Normal/Eco)	4,000lm / 2,500lm	3,800lm / 2,410lm
White Light Output (Normal)	4,000lm	3,800lm
Contrast Ratio	15,000:1	
Colour Mode	Dynamic, Presentation, Cinema, sRGB, Blackboard	
Internal Speaker(s)		
Sound Output	16W	
Keystone Correction		
Vertical / Horizontal	±30° / ±30°	
Auto Keystone Correction	Yes (Vertical only)	
Horizontal Slide Keystone Correction	Yes	
Quick Corner	Yes	
Connectivity		
Analog RGB Input	D-Sub 15Pin	2 (Blue Molding)
Analog Input	Composite	PCA x 1 (Yellow)
Digital Input	HDMI	2 (1 with MHL support)
Analog Output	D-Sub 15Pin	1
Audio Input	PCA (White/Red)	1
	Stereo Mini Jack	2
Audio Output	Stereo Mini Jack	1
USB Input	USB Type A	1 (For USB Memory, USB Document Camera, Wireless LAN and Firmware Update)
	USB Type B	1 (For USB Display, Mouse, K/B, Control and Firmware Update)
Mic I/O	Stereo Mini Jack	1
Control I/O	RS-232C	1
Network	Wired LAN	1
	Wireless LAN	Optional (using ELPAP10)
Wireless Specifications		
Supported Speed For Each Mode ³⁾	IEEE 802.11b (2.4GHz): 11 Mbps, IEEE 802.11g (2.4GHz): 54 Mbps, IEEE 802.11n (2.4GHz): 130 Mbps	
Wireless LAN Security	Quick Mode: WPA2-PSK, Advanced Mode: WPA/WPA2-PSK	
Supported Connection Mode	Infrastructure, Access Point	
Operating Temperature		
	5 - 35 °C <41 - 95 °F> (0 m / 0 ft to 2,286m / 7,500ft) 5 - 30 °C <41 - 86 °F> (over 2,286m / 7,500ft) (20% - 80% humidity, No condensation)	
Operating Altitude		
	0 - 3,000 m <0 - 9,843 ft> (over 1,500m / 4,921ft: with high altitude mode)	
Direct Power On / Off	Yes	
Start-Up Period	about 6 seconds, Warm-up Period: 30 seconds	
Cool Down Period	Instant Off	
Power Supply Voltage	100 - 240 V AC ±10%, 50/60 Hz	
Power Consumption (220 - 240V)		
Lamp On (Normal / Eco)	309W / 227W	
Standby (Network On/Off)	2.0W / 0.2W	
Dimension Excluding Feet (D X W X H)	282 x 309 x 90 mm	
Weight	Approx. 3.0kg	Approx. 3.1kg
Fan Noise (Normal / Eco)	37dB / 28dB	

¹⁾ Lamp life will vary depending upon mode selected, environmental conditions and usage. Lamp brightness decreases over time.

²⁾ Colour brightness (colour light output) and white brightness (white light output) will vary depending on usage conditions. Colour light output measured in accordance with IDMS 15:4; white light output measured in accordance with ISO 21118.

³⁾ Maximum speed and range is achievable when used with same enhanced mode technology. Actual data rates, features and performance may vary depending on your computer system, the environment and other factors.

Supplied Accessories

- Power Cable: 1.8m
- Computer Cable (VGA Cable): 1.8m
- Remote Control: Yes, with Alkaline AA Battery
- Soft Carrying Case
- Cover for ELPAP10

Optional Accessories

- Spare Lamp: ELP1P96
- Air Filter: ELPAF54 (EB-970/EB-980W)
- Wireless LAN Adaptor: ELPAP10
- Ceiling Mount (White Colour): ELPMB23

EB-970 / EB-980W



©2017 Epson Singapore Pte Ltd. All Rights Reserved. Reproduction in part or in whole, without the written permission from Epson, is strictly prohibited.

EPSON and EXCEED YOUR VISION are registered trademarks of Seiko Epson Corporation.

All other product names and other company names used herein are for identification purposes only and are the trademarks or registered trademarks of their respective owners.

Epson disclaims any and all rights in those marks. Projected images shown herein are simulations. The actual product design and contents may vary. Specifications are subject to change without notice and may vary between countries. Please check with local Epson offices for more information.

Apple, iPad and iPhone are trademarks of Apple Inc., registered in the U.S. and other countries. App Store is a service mark of Apple Inc.

Android is a trademark of Google Inc.

Dealer's Stamp

Information correct at time of printing
Printed April 2018



To find out more, visit www.epson.com.my/displaysizematters or call 1800-81-7349 (Toll-Free).

Join us EpsonMalaysia

Check for your warranty terms at www.epson.com.my/warrantytnc

Epson Malaysia Sdn Bhd (211204-X) 3rd Floor, East Tower, Wisma Consplant 1, No. 2, Jalan SS16/4, 47500 Subang Jaya, Selangor Darul Ehsan. Tel: 603-56 288 288 Fax: 603-56 212 088

Epson is the registered trademark of Seiko Epson Corporation. All other product names and other company names used herein are for caption purposes only and are the trademarks or registered trademarks of their respective owners. Epson disclaims any and all rights in those marks. Scan/Print samples shown here are simulations. Specifications are subject to change without notice.

PROTECT YOUR PROJECTOR. USE GENUINE LAMPS.



Don't compromise on safety – use Epson genuine lamps to avoid damaging your projector. Eliminate the risk of melting parts of your projector, as well as breaks that result in high-voltage shutdown. With a 0% failure rate even after 2,000 hours of usage – compared to 70% in non-genuine lamps – Epson genuine lamps are safer and more reliable. Choose the best possible viewing experience filled with long-lasting sharpness and colour in every projected image with Epson.

GENUINE EPSON LABEL

To ensure the best quality and safety when using your Epson Projector, look for the “Genuine EPSON Colour Shifting Label” on your projector lamp. Real quality and value, only with Epson genuine supplies.



DANGERS OF NON-GENUINE LAMPS

UNRELIABLE

Counterfeit lamps deteriorate and break much faster than genuine ones.



UNSAFE

Parts of your Epson projector such as the housing or wires may melt, disconnect, or become damaged when using non-genuine lamps.



POOR IMAGE QUALITY

Counterfeit lamps may result in inaccurate colour projection, lower brightness levels, as well as flickering images that spoil your viewing experience.

